

REMER

RUBINETTERIE

SERIE
SERIES

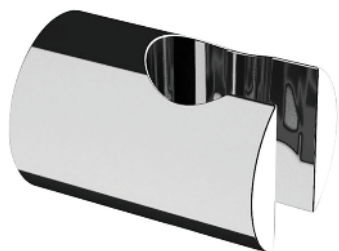
COMPONENTI DOCCIA

SHOWER COMPONENTS

CODICE
CODE

339SOM

IMMAGINE - IMAGE

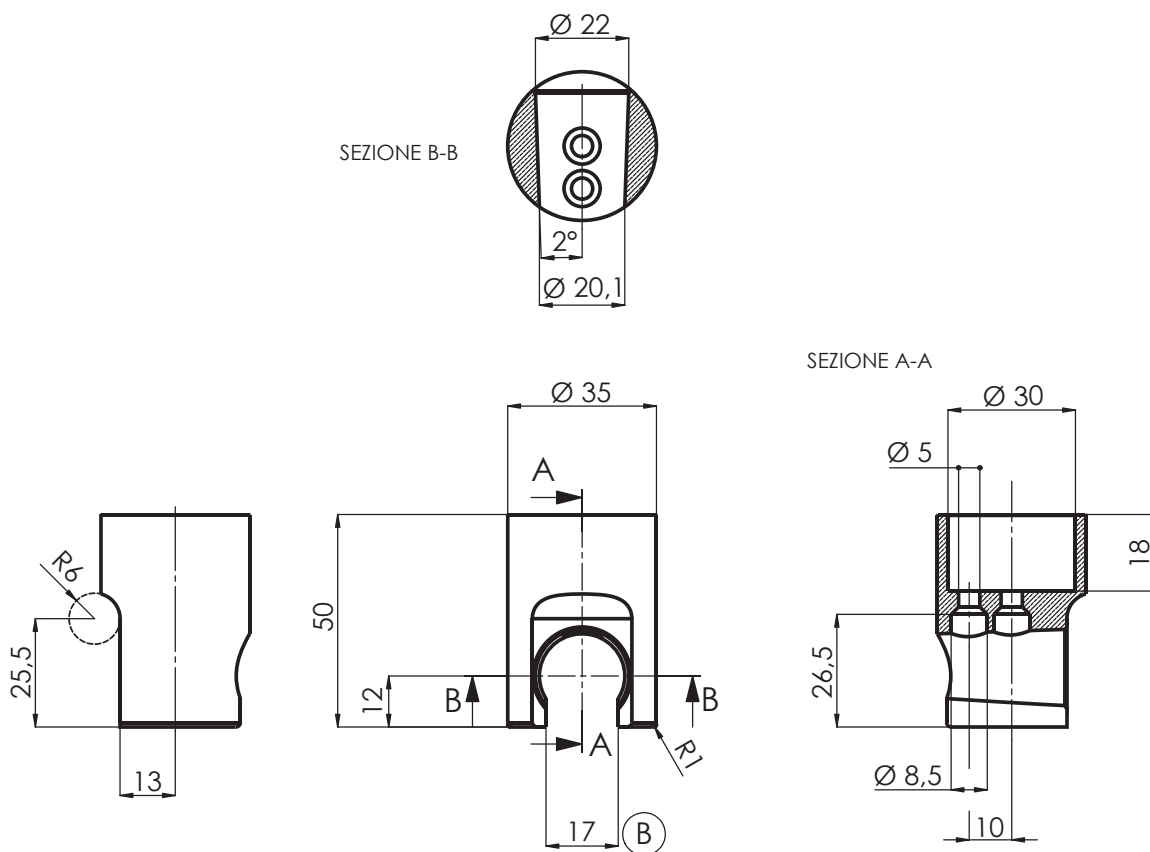


DESCRIZIONE - DESCRIPTION

Supporto "minimale" in ottone cromato per flessibile con attacco conico.

C.p. brass "minimal" shower holder for conical shower flexible hoses.

SCHEDA TECNICA - TECHNICAL FEATURES


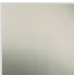


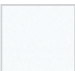





CARATTERISTICHE - FEATURES



Disponibile in Finitura
Available in Finishing

FINITURE - FINISHING

	NO Nero Opaco Matt Black		NP Nichel Spazzolato Brushed Nickel		DO Oro Lucido Shiny Gold		CFP Cromo Nero Spazzolato Brushed Black Chrome
	BO Bianco Opaco Matt White		NPO Nichel Spazzolato Opaco Matt Brushed Nickel		BG Oro Spazzolato Brushed Gold		CR Cromo Chrome

REMER Rubinetterie S.p.A.

Via Leonardo Da Vinci, 83 - 20062 Cassano d'Adda (MI) - Italy - Tel. +39 0363 364211 - info@remer.eu - www.remer.eu